



Voyager with CodeGate[®]

A better way to scan...



Metrologic



MS9540 Voyager^{CG}

FEATURES

- Automatic trigger with CodeGate[®]
- Now decodes RSS-14 bar codes
- PowerLink, user-replaceable cables
- Adjustable stand
- Firmware updates via Flash ROM
- Custom edit the bar code data
- Short-range and long-range activation
- Easy programming using Windows[®] software or bar codes
- Supports commonly used interfaces, including USB
- GPDS system compatible

Metrologic's MS9540

Voyager^{CG} offers high performance scanning, a futuristic design and a new intuitive scanning system that offers conventional, triggered scans.

The MS9540 Voyager^{CG} was designed to replace triggered scanners. In doing so, Metrologic's engineering department incorporated a feature called CodeGate that makes the MS9540 more intuitive to use than a triggered scanner. Using Metrologic's patented auto-trigger, the laser is automatically activated when a bar code is presented, allowing the user to easily select the bar code. Then with a press of the CodeGate button, the data is transmitted to the host system.

This unique concept makes Voyager perfect for menu-scanning. When the MS9540 is placed in its stand, CodeGate is automatically deactivated allowing Voyager^{CG} to be used as a fully automatic presentation scanner.

Voyager^{CG} now includes the ability to decode the emerging Reduced Space Symbology (RSS). Industries including supermarkets, pharmaceutical, and healthcare are beginning to utilize this new symbology. For those Voyager^{CG}'s already deployed, an online Flash ROM upgrade is available at www.metrologic.com.

Metrologic is now backing the MS9540 Voyager^{CG} with a standard 5-year warranty.



OPERATIONAL

Light Source	Visible Laser Diode 650 nm ± 10 nm
Laser Power	0.96 mW (peak)
Depth of Scan Field (programmable)	0 mm - 200 mm (0" - 8") for 0.33 mm (0.013") bar codes
Width of Scan Field	44 mm (1.7") @ 0mm; 240 mm (9.4") @ 200 mm (8.0")
Scan Speed	70 ± 2 scan lines per second
Scan Pattern	Single scan line
Minimum Bar Width	0.127 mm (0.005")
Decode Capability	Autodiscriminates all standard bar codes; for other symbologies call Metrologic
System Interfaces	PC Keyboard Wedge, RS232, ODA, Light Pen Emulation, IBM-4860/486X, Stand Alone Keyboard, USB
Print Contrast	20% minimum reflectance difference
Number Characters Read	Up to 80 data characters
Rot, Pitch, Yaw	42°, 66°, 52°
Beep Operator	7 times or no beep
Indicators (LED)	Green = laser on, ready to scan Red = good read

MECHANICAL

Height	180 mm (7.0")
Depth	42 mm (1.6")
Width - Handle	80 mm (3.1")
Width - Head	102 mm (4.0")
Weight	140 g (5.29 oz)
Termination	18 pin modular RJ45
Cable	Standard 2.7 m (9') coiled; optional 2.1 m (7') straight

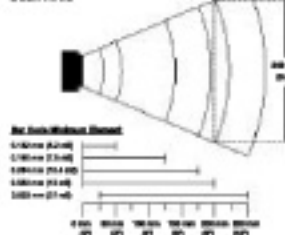
ELECTRICAL

Input Voltage	5 VDC ± 0.25 V
Power - Operating	575 mW
Power - Standby	225 mW
Current - Operating	115 mA typical @ 5 VDC
Current - Standby	45 mA typical @ 5 VDC
DC Transients	Class 2, 5.2 VDC @ 650 mA
Laser Class	ODM - Class II; DVG9025-1394W11-1890 Class I
EMC	FCC, ICES-002 & CNV002 Class B

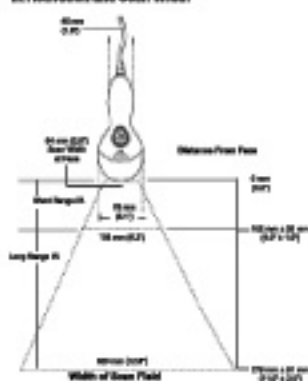
ENVIRONMENTAL

Operating Temperature	0°C to 40°C (32°F to 104°F)
Storage Temperature	-40°C to 80°C (-40°F to 167°F)
Humidity	5% to 95% relative humidity, non-condensing
Light Levels	Up to 6847 lux (500 Foot-candles)
Shock	Designed to withstand 1.0 m (3') drops
Contaminants	Sealed to resist airborne particulate contaminants
Ventilation	None required

Scan Area



IR Activation and Scan Width



Dimensions

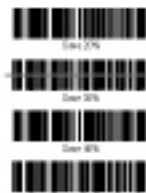


Specifications subject to change without notice.
Printed in U.S.A., Copyright November 2000
Metrologic, All rights reserved.

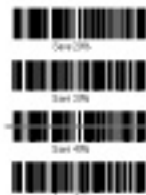


000046

Menu Scanning



- Auto-trigger activates the laser
- High-Visibility laser line helps you choose



- Pick the bar code you want.
- Press the CodeGate button
- Eliminates incorrect scans

Two Modes of Operation

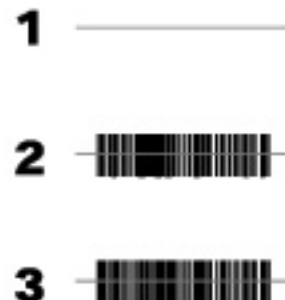


- Auto-trigger while in the stand
- Bar code is automatically decoded and transmitted



- CodeGate activates when removed from the stand
- Bar code data is transmitted when the CodeGate button is pressed

CodeGate Gives You Control



- Auto trigger activates the laser
- Place the laser line on the bar code
- Press the CodeGate button to transmit the data

Metrologic
www.metrologic.com

USA
M: 1-800-638-6388
metro@metrologic.com

Australia
M: 61-832-7215
metro@metrologic.com

UK (UK)
M: 44-1329-5140
metro@metrologic.com

China (CN)
M: 86-10-2527071
metro@metrologic.com

South America
M: 51-11-518-7153
metro@metrologic.com

Japan (JP)
M: 81-3-534-8171
metro@metrologic.com

Spain (ES)
M: 34-91-518-8335
metro@metrologic.com

Germany (DE)
M: 49-49-4001-0
metro@metrologic.com

Metrologic Instruments, Inc. | 99 Colton Road | Blackwood, NJ 08012-4682
Telephone: 856-238-6108 or 1-800-638-6388 | Fax: 856-325-0673